

N8-Acetyl-Spermidine ELISA kit – Plasma, Serum, Supernatant

Ref: IS-I-2500R

Polyamines are molecules derived from ornithine (Orn) (i.e., putrescine, spermine, spermidine) or arginine (Arg) (i.e., agmatine). While ornithine decarboxylase is responsible for ornithine degradation and spermidine production, cSAT and nSAT transform spermidine to **N8-acetylspermidine** (N8-AcSpdn). These molecules are involved in many critical processes such as cell proliferation, nucleic acid synthesis, and cytoprotection from oxidative stress¹. Several studies have evidenced that polyamine metabolism is frequently increased in cancer² which can fuel tumor progression³ and favor immune escape⁴. Elevated levels of polyamines in sera of cancer patients have been demonstrated to correlate with poor prognosis.

Sample type Plasma, Cell culture supernatant

Capacity 96 tests

Sensitivity 0.5nM

Range 2.4 – 93.75nM

Assay time Sample preparation 3h, ELISA overnight

Reactivity Reacts with all species

INFORMATIONS

Product overview

Product name	N8-Acetyl-Spermidine ELISA kit
Description	Competitive ELISA kit for the quantitative measurement of N8-Acetyl-Spermidine (N8-AcSpdn) in plasma samples. For research use only
Format	96-well plate
Samples	Plasma, Cell culture supernatant
Minimal sample volume	20µL
Reactivity	Reacts with all species
Standard range	2.4 - 93.75nM
Sensitivity	0.5nM
Specificity	No significant cross-reactivity was observed with N1-Acetyl-Spermidine, Spermidine, Spermine, Ornithine & Putrescine
Assay time	Sample preparation 3h and ELISA overnight
Storage	Store at 2-8°C for up to 6 months
Datasheets	Instructions for use , Material Safety Datasheet

For research use only - Do not use for diagnostic

PROTOCOLS

Sample collection & storage EDTA Plasma
Store samples at 2-8°C for up to 48h or -20°C for longer period (up to 6 months)

Sample preparation Sample preparation (3 hours)

ELISA N8-Acetyl-Spermidine antiserum overnight incubation, revelation and read steps (1h)

Detailed protocol [Download instructions for use](#)

REFERENCES

Selected articles on N8-Acetyl-Spermidine

- Pegg A., [Functions of Polyamines in Mammals](#), J Biol Chem, 2016
- Handa et al., [Polyamines: Bio-Molecules with Diverse Functions in Plant and Human Health and Disease](#), Front Chem, 2018
- Murray-Stewart et al., [Targeting polyamine metabolism for cancer therapy and prevention](#), Biochem J, 2016
- Casero et al., [Polyamine metabolism and cancer: treatments, challenges and opportunities](#), Nat Rev Cancer, 2018
- Hibino et al., [Tumor cell-derived spermidine is an oncometabolite that suppresses TCR clustering for intratumoral CD8+ T cell activation](#), Proc Natl Acad Sci USA, 2023
- Soda K., [The mechanisms by which polyamines accelerate tumor spread](#), J Exp Clin Cancer Res, 2011

Product pictures

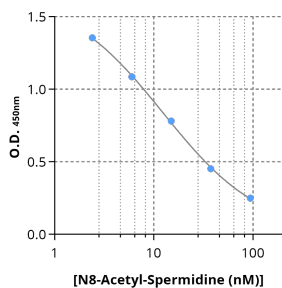


N8-Acetyl-Spermidine ELISA kit

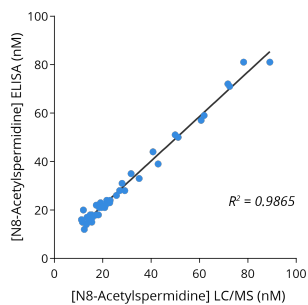


N8-Acetyl-Spermidine ELISA kit

IS-I-2500R ELISA kit



Typical standard curve of N8-Acetyl-Spermidine ELISA



Cross-validation of N8-Acetyl-Spermidine ELISA and LC/MS data in human plasma samples

N8-AcSpdn was quantified in human plasma samples from healthy subjects using IS-I-2500R ELISA kit or by LC/MS. Correlation study showed $R^2=0.9865$, thereby confirming the accuracy of the immunoassay.

Contact information

Immusmol
229 Cours de l'Argonne

To order, review, ask for technical support, visit product page at:

<https://www.immusmol.com/shop/n8-acetyl-spermidine-elisa-kit/>