

Serotonin Antibody – Rabbit

Polyclonal

Ref: IS1086

This novel antibody raised against Serotonin (5-hydroxytryptamine, 5-HT) (#IS1086, polyclonal) is compatible with formalin-fixed biological materials. While allowing for the specific immunodetection of the serotonergic systems, our antibody has been validated for its use through immunochemistry and immunofluorescence applications on formalin-fixed paraffin-embedded (FFPE) samples originating from different species.

Clonality	Polyclonal antibody
Host	Rabbit
Reactivity	Reacts with all species
Validated applications	IF/IHC-P, IF/IHC-F (manual and automated staining)
Format	50µL

INFORMATIONS

Product overview

Product name	Serotonin antibody (5-HT rabbit polyclonal Ab)
Synonyms	Anti-5-HT antibody Anti-5-hydroxytryptamine antibody
Immunogen	Conjugated 5-HT
Specificity	When tested in competitive ELISA, the anti-conjugated serotonin antibody did not cross-react with 5-hydroxytryptamine analogs, including tryptamine and 5-hydroxytryptophan
Volume	50µL

Storage

Form	Liquid
Purity	Purified anti-serum
Storage buffer	Store at +4°C for short term (1-2 months). Aliquot and store at -20°C for long term. Avoid repeated freeze / thaw cycles
Material safety datasheet	Download MSDS

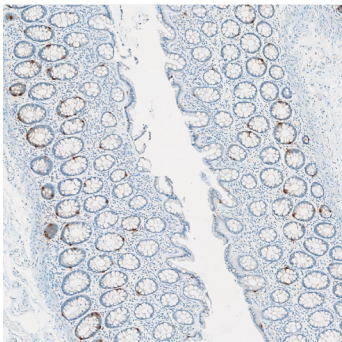
PROTOCOLS

IHC	Dilute at 1/250 -1/1000
Comments	Optimal working dilutions must be determined by the end-user
Restrictions	For research use only

REFERENCES

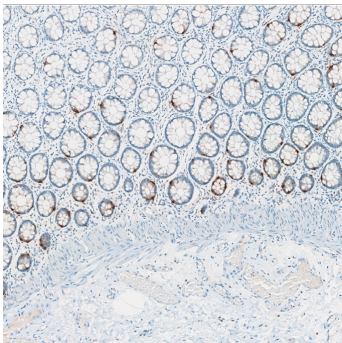
Antibody not yet cited.

Product pictures



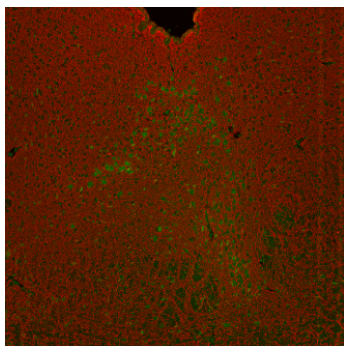
Immunohistochemistry against serotonin (5HT) on a FFPE human colon coronal section

5HT immunoreactivity, revealed using anti-serotonin (5HT, rabbit polyclonal antibody #IS1086), is highlighted in enterochromaffin cells of the intestinal mucosa.



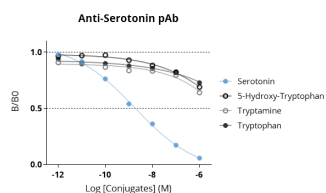
Immunohistochemistry against serotonin (5HT) on a FFPE human colon coronal section.

5HT immunoreactivity, revealed using anti-serotonin (5HT, rabbit polyclonal antibody #IS1086), is highlighted in enterochromaffin cells of the intestinal mucosa.



Serotonergic neurons of the Raphe nucleus through a FFPE mouse brainstem coronal section

revealed by anti-serotonin (5HT, rabbit polyclonal antibody #IS1086) and Microtubule-Associated Protein-2 (MAP2) immunohistofluorescence. 5HT immunoreactivity highlights well the 5HT-containing neurons of the dorsal (DRN).



Affinity & specificity of anti-Serotonin rabbit polyclonal antibody

Competitive ELISA highlights that low amounts of conjugated Serotonin are required to abolish antigen-antibody reaction (high affinity), while rising concentrations of analog conjugates (5-Hydroxy-Tryptophan, Tryptamine or Tryptophan) affect only to a lesser extent the reaction (high specificity).

Contact information

Immusmol
229 Cours de l'Argonne
33 000 Bordeaux - France
Tel: +33 (0) 5 6431 1170
www.immusmol.com

To order, review, ask for technical support, visit product page at:

<https://www.immusmol.com/shop/serotonin-polyclonal-antibody-is1086/>