

# L-Glutamine Antibody – Rabbit Polyclonal

Ref: IS1060

This rabbit polyclonal antibody recognizes L-Glutamine at a 1/10 000 working dilution, while displaying no significant cross-reactivity with competitors. Using the [STAINperfect immunostaining kit A](#), this primary antibody was used to visualize Glutamine in midbrain organoids (IF) and human tumor tissues (IHC).

<b>Clonality</b>	Polyclonal
<b>Host</b>	Rabbit
<b>Reactivity</b>	Reacts with all species
<b>Validated application</b>	IF/IHC
<b>Staining procedure</b>	<a href="#">STAINperfect immunostaining kit A</a>
<b>Format</b>	50µl
<b>References</b>	<a href="#">Cited in 2 papers</a>

# INFORMATIONS

---

## Product overview

<b>Product name</b>	L-Glutamine – Rabbit pAb
<b>Synonyms</b>	Anti-L-Glutamine antibody Anti-Levoglutamide antibody Anti-L-(+)-Glutamine antibody Anti-Glutamic acid amide antibody Anti-(S)-2,5-Diamino-5-oxopentanoic acid antibody
<b>Immunogen</b>	Conjugated L-Glutamine
<b>Specificity</b>	When tested in competitive ELISA, the anti-conjugated L-Ornithine antibody did not show any significant cross reactivity with L-Ornithine competitors: L-Ornithine, L-Arginine and L-Asparagine

## Storage

<b>Form</b>	Liquid
<b>Purity</b>	Purified anti-serum
<b>Storage</b>	Store at 4°C
<b>Storage buffer</b>	Store at +4°C for short term (1-2 months). Aliquot and store at -20°C for long term. Avoid repeated freeze / thaw cycles
<b>Material safety datasheet</b>	<a href="#">Download MSDS</a>

# PROTOCOLS

## IF - Cell cultures, Whole mounts, Tissue sections

Dilute antibody with the antibody diluent provided in the [STAINperfect immunostaining kit A](#). Use at 1/250 -1/1000 dilution. Follow the STAINperfect protocol suited to your sample

### Comments

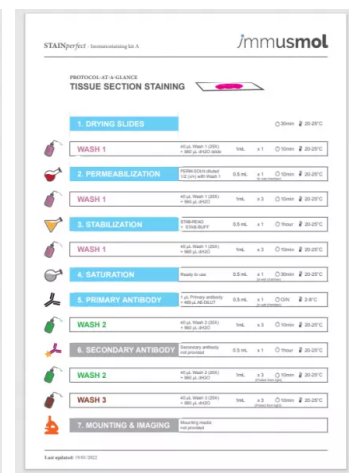
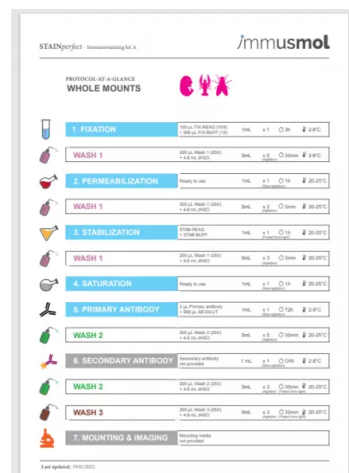
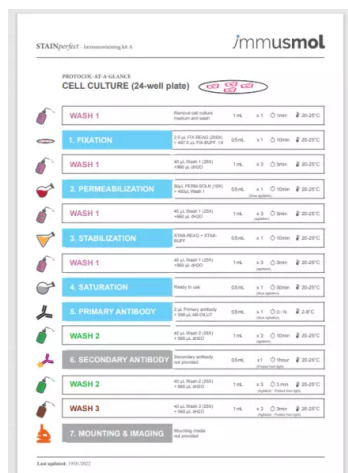
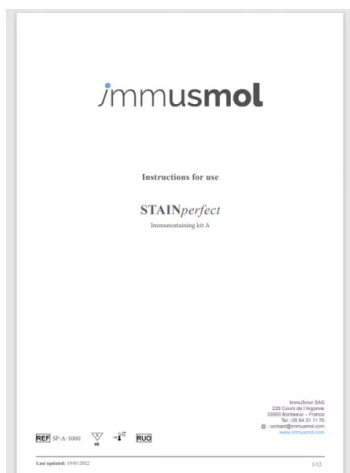
Optimal working dilutions must be determined by the end-user

### Restrictions

For research use only

### Full protocol

[Download STAINperfect protocol](#)



[Complete Instructions for Use](#)

[Protocol-at-a-glance for cell cultures](#)

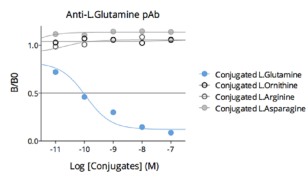
[Protocol-at-a-glance for whole mounts](#)

[Protocol-at-a-glance for tissue sections](#)

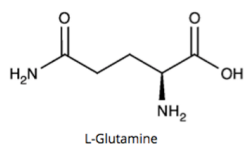
# REFERENCES

Product citations

# Product pictures



### Affinity & specificity of anti- L-Glutamine antibody



### L-Glutamine

L-Glutamine

## Contact information

Immusmol  
229 Cours de l'Argonne  
33 000 Bordeaux - France  
Tel: +33 (0) 5 6431 1170  
[www.immusmol.com](http://www.immusmol.com)

**To order, review, ask for technical support, visit product page at:**

<https://www.immusmol.com/shop/l-glutamine-pab/>