

L-Ornithine Antibody – Rabbit Polyclonal

Ref: IS1059

This anti-L-Ornithine antibody recognizes its target at a 1/10 000 working dilution, while displaying no significant cross-reactivity with competitors such as L-Glutamine, L-Glutamate and L-Arginine. Our team is currently working on the IF/ICC/IHC protocol for optimal staining in combination with the [STAINperfect immunostaining kit A](#).

| | |
|---------------------------|---|
| Clonality | Polyclonal |
| Host | Rabbit |
| Reactivity | Reacts with all species |
| Validated by | ELISA |
| Staining procedure | STAINperfect immunostaining kit A |
| Format | 50µl |

INFORMATIONS

Product overview

| | |
|---------------------|--|
| Product name | L-Ornithine – Rabbit pAb |
| Synonyms | Anti-L-Ornithine antibody Anti-(S)-2,5-Diaminopentanoic acid antibody Anti-(S)-Ornithine antibody Anti-(S)-2,5-diaminovaleric acid antibody |
| Immunogen | Conjugated L-Ornithine |
| Specificity | When tested in competitive ELISA, the anti-conjugated L-Ornithine antibody did not show any significant cross reactivity with L-Ornithine competitors: L-Glutamine, L-Glutamate and L-Arginine |

Storage

| | |
|----------------------------------|--|
| Form | Liquid |
| Purity | Purified anti-serum |
| Storage | Store at 4°C |
| Storage buffer | Store at +4°C for short term (1-2 months). Aliquot and store at -20°C for long term. Avoid repeated freeze / thaw cycles |
| Material safety datasheet | Download MSDS |

PROTOCOLS

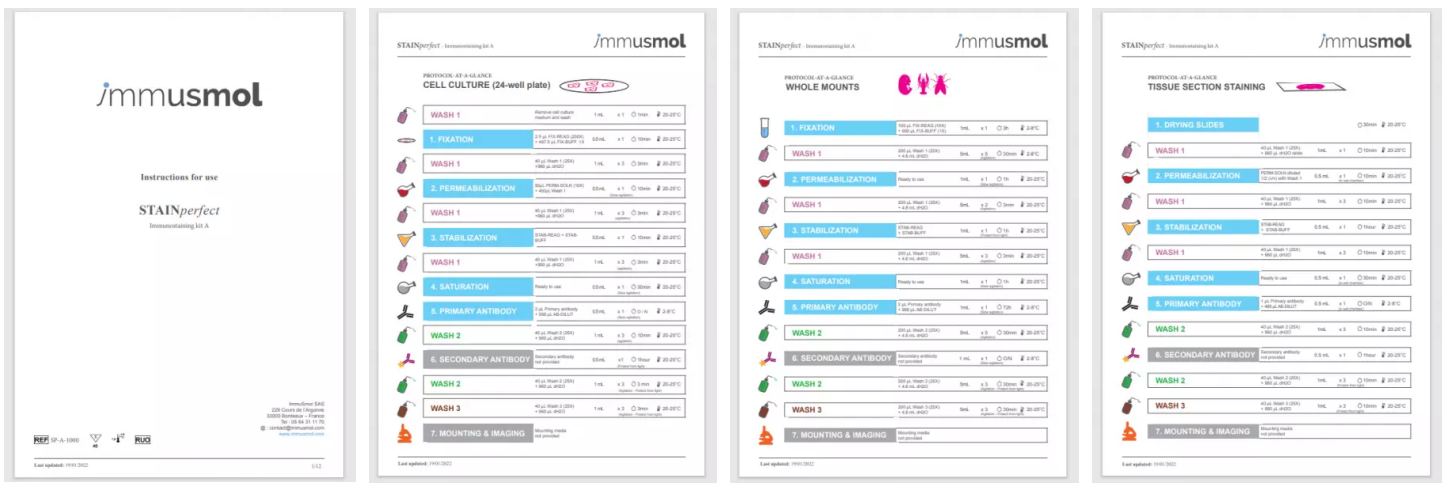
Optimization of staining protocol ongoing

Standard STAINperfect procedure Dilute antibody with the antibody diluent provided in the [STAINperfect immunostaining kit A](#). Use at 1/250 -1/1000 dilution. Follow the STAINperfect protocol suited to your sample

Comments Optimal working dilutions must be determined by the end-user

Restrictions For research use only

Full protocol [Download STAINperfect protocol](#)



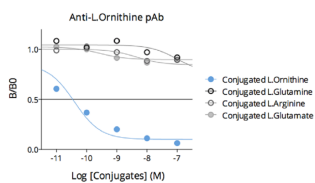
[Complete Instructions for Use](#)

[Protocol-at-a-glance for cell culture](#)

[Protocol-at-a-glance for whole mounts](#)

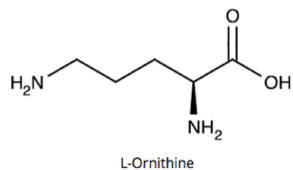
[Protocol-at-a-glance for tissue section staining](#)

Product pictures



Affinity & specificity of anti- L-Ornithine antibody

Competitive ELISA demonstrates that low amounts of L-Ornithine conjugate are required to abolish antigen-antibody reaction (high affinity), while rising concentrations of L-Glutamine, L-Glutamate and L-Arginine (L-Ornithine competitors) do not affect reaction (high specificity).



L-Ornithine

L-Ornithine

Contact information

Immusmol
229 Cours de l'Argonne
33 000 Bordeaux - France
Tel: +33 (0) 5 6431 1170
www.immusmol.com

To order, review, ask for technical support, visit product page at:

<https://www.immusmol.com/shop/l-ornithine-pab/>