

L-Homoarginine Antibody – Rabbit Polyclonal

Ref: IS1025

This rabbit polyclonal antibody recognizes L-Homoarginine at a 1/10 000 working dilution, while displaying no significant cross-reactivity with competitors such as Asymmetric Dimethyl Arginine (ADMA), Symmetric Dimethyl Arginine (SDMA) and L-Arginine. Our team is currently working on the IF/ICC/IHC protocol for optimal staining in combination with the [STAINperfect immunostaining kit A](#).

Clonality	Polyclonal
Host	Rabbit
Reactivity	Reacts with all species
Validated by	ELISA
Staining procedure	STAINperfect immunostaining kit A
Format	50µl

INFORMATIONS

Product overview

Product name	L-Homoarginine - Rabbit pAb
Synonyms	Anti-L-Homoarginine antibody Anti-(S)-2-Amino-6-guanidinohexanoic acid hydrochloride antibody
Immunogen	Conjugated L-Homoarginine
Specificity	When tested in competitive ELISA, the anti-conjugated L-Homoarginine antibody did not show any significant cross reactivity with L-Homoarginine competitors, Asymmetric DiMethyl Arginine (ADMA), Symetric DiMethyl Arginine (SDMA) and L-Arginine

Storage

Form	Liquid
Purity	Purified anti-serum
Storage	Store at 4°C
Storage buffer	Store at +4°C for short term (1-2 months). Aliquot and store at -20°C for long term. Avoid repeated freeze / thaw cycles
Material safety datasheet	Download MSDS

PROTOCOLS

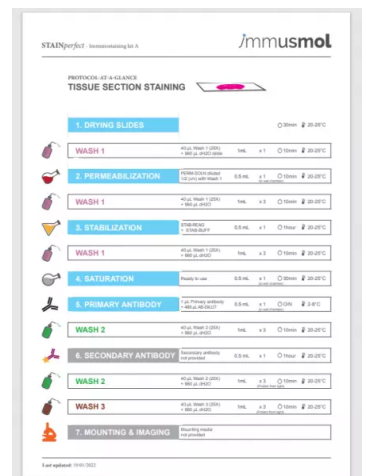
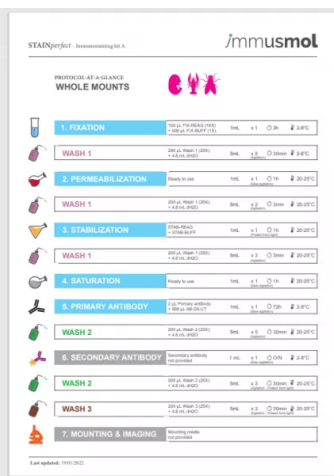
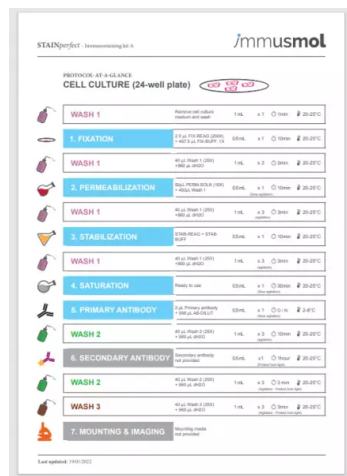
Optimization of staining protocol ongoing

Standard STAINperfect procedure Dilute antibody with the antibody diluent provided in the [STAINperfect immunostaining kit A](#). Use at 1/250 -1/1000 dilution. Follow the STAINperfect protocol suited to your sample

Comments Optimal working dilutions must be determined by the end-user

Restrictions For research use only

Full protocol [Download STAINperfect protocol](#)



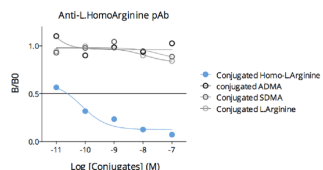
[Complete Instructions for Use](#)

[Protocol-at-a-glance for cell cultures](#)

[Protocol-at-a-glance for whole mounts](#)

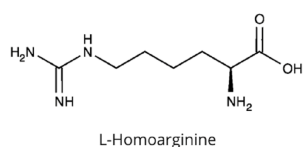
[Protocol-at-a-glance for tissue sections](#)

Product pictures



Affinity & specificity of anti-L-Homoarginine antibody

Competitive ELISA demonstrates that low amounts of L-Homoarginine conjugate are required to abolish antigen-antibody reaction (high affinity), while rising concentrations of Asymmetric Dimethyl Arginine (ADMA), Symmetric Dimethyl Arginine (SDMA) and L-Arginine (L-Homoarginine competitors) do not affect reaction (high specificity).



L-Homoarginine

L-Homoarginine

Contact information

Immusmol
 229 Cours de l'Argonne
 33 000 Bordeaux - France
 Tel: +33 (0) 5 6431 1170
www.immusmol.com

To order, review, ask for technical support, visit product page at:

<https://www.immusmol.com/shop/l-homoarginine-pab/>