

L-Tyrosine Antibody – Rabbit Polyclonal

Ref: IS1037

The anti-L-Tyrosine antibody IS1037 is a rabbit polyclonal antibody developed to be highly affine and specific. Combined with optimal sample preparation using [STAINperfect immunostaining kit A](#), this antibody allows direct L-Tyrosine visualization in whole mounts, tissue sections.

Clonality	Polyclonal antibody
Host	Rabbit
Reactivity	Reacts with all species
Tested samples	Whole mount, tissue sections & ELISA
Staining procedure	STAINperfect immunostaining kit A
Format	50µL (approx. 40 tissue sections)

INFORMATIONS

Product overview

Product name	L-Tyrosine antibody
Synonyms	Anti-L-Tyrosine polyclonal antibody (S)-2-Amino-3-(4-hydroxyphenyl)propionic acid, 3-(4-Hydroxyphenyl)-L-alanine polyclonal antibody
Immunogen	Conjugated L-Tyrosine
Specificity	When tested in competitive ELISA, the anti-conjugated L-Tyrosine antibody do not show significant cross-reactivity with several competitors including L-Phenyl-Alanine and L-DOPA conjugates

Storage

Form	Liquid
Purity	Purified anti-serum
Storage buffer	Store at +4°C for short term (1-2 months). Aliquot and store at -20°C for long term. Avoid repeated freeze / thaw cycles
Material safety datasheet	Download MSDS

PROTOCOLS

IF - Cell cultures, Whole mounts, Tissue sections

Dilute antibody with the antibody diluent provided in the [STAINperfect immunostaining kit A](#). Use at 1/250 -1/1000 dilution. Follow the STAINperfect protocol suited to your sample

Comments

Optimal working dilutions must be determined by the end-user

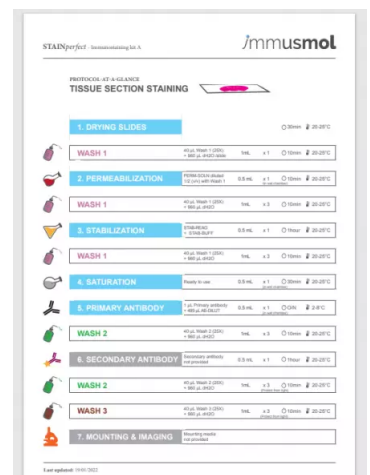
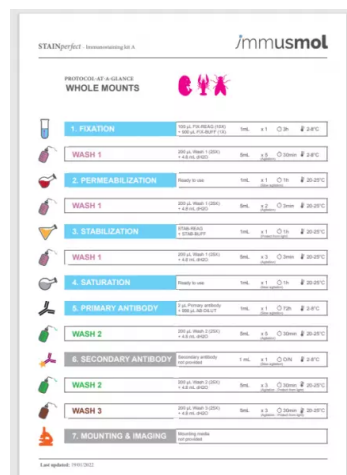
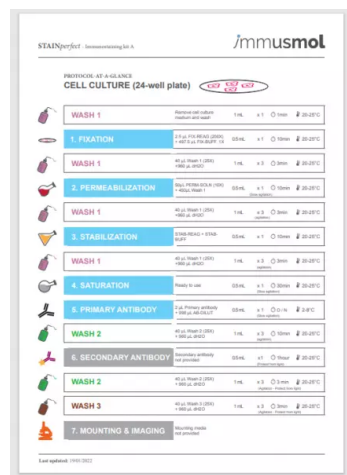
Restrictions

For research use only

Full protocol

[Download STAINperfect protocol for L-Tyrosine staining](#)

Protocols-at-a-glance



[Complete Instructions for Use](#)

[Protocol-at-a-glance for cell cultures](#)

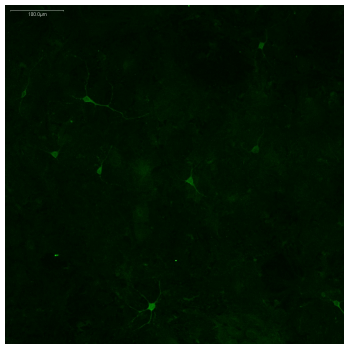
[Protocol-at-a-glance for whole mounts](#)

[Protocol-at-a-glance for tissue sections](#)

REFERENCES

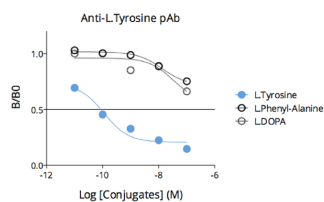
Antibody not yet cited.

Product pictures



L-Tyrosine imaging in mouse embryonic midbrain neurons (E13.5)

Using STAINperfect immunostaining kit A, L-Tyrosine (green) was detected within mouse embryonic midbrain neurons (E13.5) following the protocol optimized for whole mount samples. Stainings were performed using Immusmol rabbit anti-L-Tyrosine polyclonal Ab (IS1037). Fluorescent conjugated antibodies were used and images acquired by confocal imaging.



Affinity & specificity of anti- L-Tyrosine antibody

Competitive ELISA demonstrates that low amounts of L-Tyrosine conjugate are required to abolish antigen-antibody reaction (high affinity), while rising concentrations of L-Tyrosine competitors L-DOPA or L-Phenyl-Alanine do not affect reaction (high specificity).

Contact information

Immusmol
229 Cours de l'Argonne
33 000 Bordeaux - France
Tel: +33 (0) 5 6431 1170
www.immusmol.com

To order, review, ask for technical support, visit product page at:

<https://www.immusmol.com/shop/l-tyrosine-rabbit-pab/>