

Normetanephrine Polyclonal Antibody

Ref: IS1028

The anti-Normetanephrine antibody IS1028 is a rabbit polyclonal antibody that displays high affinity and specificity. When samples are prepared with the [STAINperfect immunostaining kit A](#), our antibody detects Normetanephrine in whole mounts, cell culture and tissue sections.

Clonality	Polyclonal antibody
Host	Rabbit
Reactivity	Reacts with all species
Tested samples	Whole mounts, cell culture, tissue sections
Staining procedure	STAINperfect immunostaining kit A
Format	50µL (approx. 40 tissue sections)

INFORMATIONS

Product overview

Product name	Normetanephrine antibody
Synonyms	Anti-3-O-Methylnoradrenaline antibody
Immunogen	Conjugated Normetanephrine
Specificity	When tested in competitive ELISA, the anti-conjugated Normetanephrine antibody did not show any significant cross reactivity with Normetanephrine analogs, including metanephrine and noradrenaline
Volume	50µL

Storage

Form	Liquid
Purity	Purified anti-serum
Storage buffer	Store at +4°C for short term (1-2 months). Aliquot and store at -20°C for long term. Avoid repeated freeze / thaw cycles
Material safety datasheet	Download MSDS

PROTOCOLS

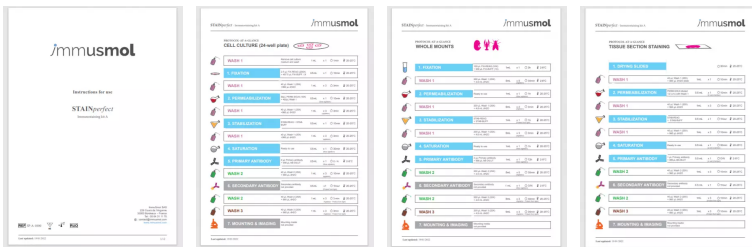
IF - Cell cultures, Whole mounts, Tissue sections Dilute antibody with the antibody diluent provided in the [STAINperfect immunostaining kit A](#). Use at 1/250 -1/1000 dilution. Follow the STAINperfect protocol suited to your sample

Comments Optimal working dilutions must be determined by the end-user

Restrictions For research use only

Full protocol [Download STAINperfect protocol for Normetanephrine staining](#)

Protocols-at-a-glance



[Complete Instructions for Use](#)

[Protocol-at-a-glance for cell cultures](#)

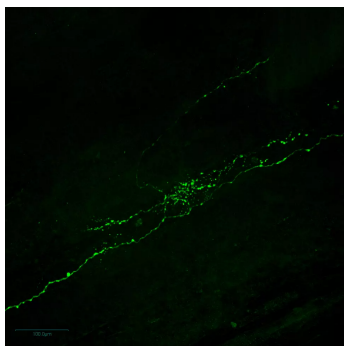
[Protocol-at-a-glance for whole mounts](#)

[Protocol-at-a-glance for tissue sections](#)

REFERENCES

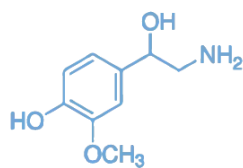
Antibody not yet cited. Submit an article and [get a 10% discount](#).

Product pictures



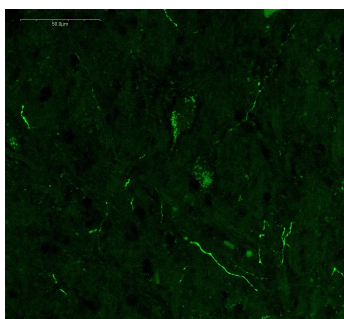
Immunofluorescence imaging of Normetanephrine in crayfish

Normetanephrine was stained within fibers of crayfish thoracic ganglia. Staining was performed on whole mount nervous chains with Stainperfect immunostaining kit A following whole mount sample protocol. Fluorescent labeled secondary antibody was used and image captured by confocal imaging.



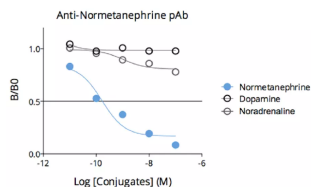
Normetanephrine

Normetanephrine



Detection of Normetanephrine in adult mouse midbrain

Normetanephrine was detected within mouse adult midbrain in both soma with granular pattern and fibers. Staining was performed after sample preparation - free floating cryosections - with Stainperfect immunostaining kit A following whole mount protocol. Fluorescent labeled secondary antibody was used and picture obtained by confocal imaging.



Affinity & specificity of anti-Normetanephrine antibody

Competitive ELISA demonstrates that low amounts of Normetanephrine conjugate are required to abolish antigen-antibody reaction (high affinity), while rising concentrations of Normetanephrine competitors Dopamine or Noradrenaline do not affect reaction (high specificity).

Contact information

Immusmol
229 Cours de l'Argonne
33 000 Bordeaux - France

Tel: +33 (0) 5 6431 1170

www.immusmol.com

To order, review, ask for technical support, visit product page at:

<https://www.immusmol.com/shop/normetanephine-rabbit-pab/>