

Histamine Antibody – Rabbit

Polyclonal

Ref: IS1039

The anti-histamine antibody IS1039 is a rabbit polyclonal antibody developed to label Histamine in whole mounts, cell culture and tissue sections. The antibody was validated for IF in mouse and crayfish brain tissues, using the [STAINperfect immunostaining kit A](#).

Clonality	Polyclonal antibody
Host	Rabbit
Reactivity	Reacts with all species
Tested samples	Whole mounts, cell culture, tissue sections
Staining procedure	STAINperfect immunostaining kit A
Format	50µl (approx. 40 tissue sections)

INFORMATIONS

Product overview

Product name	Histamine antibody – Rabbit pAb
Synonyms	Anti-Histamine antibody Anti-2-(4-Imidazolyl)ethylamine antibody
Immunogen	Conjugated Histamine
Specificity	When tested in competitive ELISA, the anti-conjugated Histamine antibody did not show any significant cross reactivity with Histidine conjugate
Volume	50µL

Storage

Form	Liquid
Purity	Purified anti-serum
Storage	Store at +4°C for short term (1-2 months). Aliquot and store at -20°C for long term. Avoid repeated freeze / thaw cycles
Material safety datasheet	Download MSDS

PROTOCOLS

IF - Cell cultures, Whole mounts, Tissue sections

Dilute antibody with the antibody diluent provided in the [STAINperfect immunostaining kit A](#). Use at 1/250 -1/1000 dilution. Follow the STAINperfect protocol suited to your sample

Comments

Optimal working dilutions must be determined by the end-user

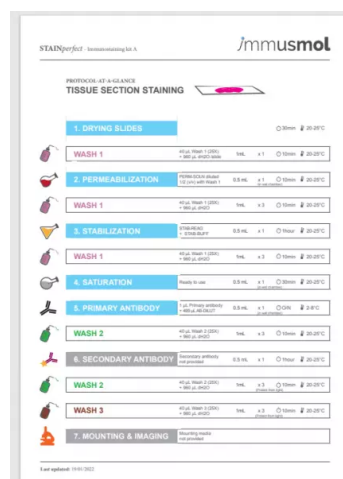
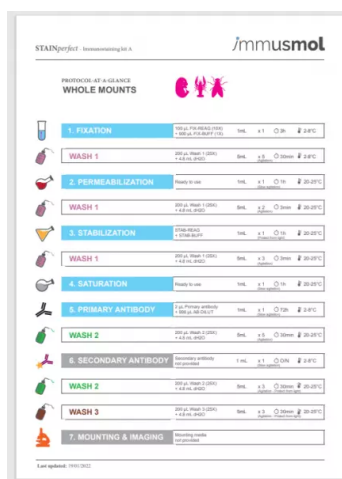
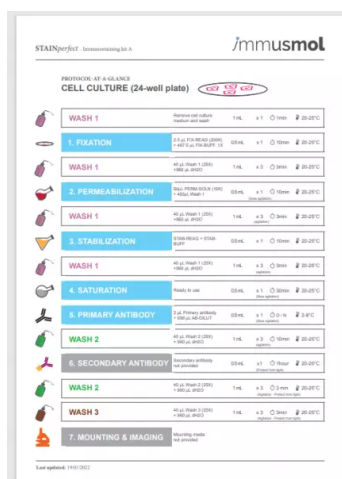
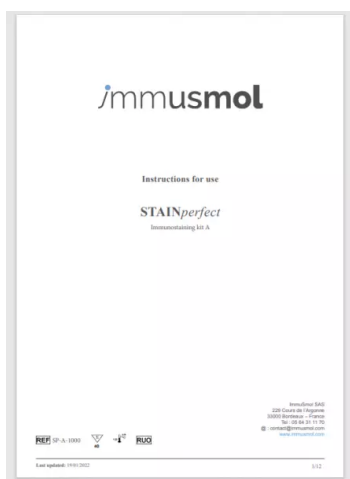
Restrictions

For research use only

Full protocol

[Download STAINperfect protocol for histamine staining](#)

Protocols-at-a-glance



[Complete Instructions for Use](#)

[Protocol-at-a-glance for cell cultures](#)

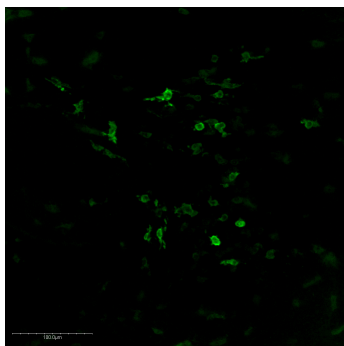
[Protocol-at-a-glance for whole mounts](#)

[Protocol-at-a-glance for tissue sections](#)

REFERENCES

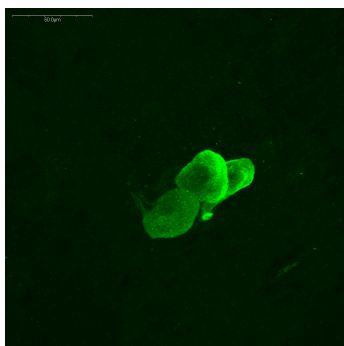
Antibody not yet cited.

Product pictures



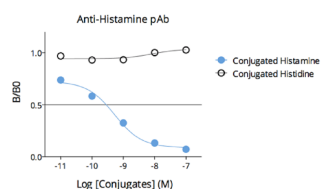
Immunofluorescence imaging of Histamine in mouse midbrain

Histamine was detected into whole mount mouse midbrain using STAINperfect immunostaining kit A. Staining was obtained following the protocol for whole mounts samples preparation combined with our IS1039 rabbit polyclonal anti-histamine antibody. After incubation with a fluorescent labeled secondary antibody, confocal imaging was performed for picture acquisition.



Histamine detection into crayfish CNS

Using STAINperfect immunostaining kit A, Histamine was detected into the CNS of a crayfish. Staining was obtained following the protocol for whole mounts samples with IS1039 rabbit polyclonal anti-histamine antibody. Fluorescent labeled secondary antibody was used and picture was acquired by confocal imaging.



Affinity & specificity of anti-Histamine antibody

Competitive ELISA demonstrates that low amount of Histamine conjugate is required to displace antigen-antibody reaction (high affinity), while rising concentrations of Histidine (Histamine competitor) do not affect reaction (high specificity).

Contact information

Immusmol
229 Cours de l'Argonne
33 000 Bordeaux - France
Tel: +33 (0) 5 6431 1170
www.immusmol.com

To order, review, ask for technical support, visit product page at:

<https://www.immusmol.com/shop/histamine-rabbit-pab/>