

# L-Noradrenaline Antibody (Norepinephrine) – Rabbit Polyclonal

Ref: IS1042

The anti-Noradrenaline (NA) antibody IS1042 was validated for immunofluorescence in mouse brain and spinal cord tissues, in combination with the [STAINperfect immunostaining kit A](#). This anti-Norepinephrine antibody was recently used to evidence noradrenergic neurons in spider brain ([Jin et al, Nature Ecology & Evolution, 2023](#)).

<b>Clonality</b>	Polyclonal antibody
<b>Host</b>	Rabbit
<b>Reactivity</b>	Reacts with all species
<b>Tested samples</b>	Whole mounts, cell culture, tissue sections
<b>Staining procedure</b>	<a href="#">STAINperfect immunostaining kit A</a>
<b>Format</b>	50µl (approx. 40 tissue sections)
<b>References</b>	<a href="#">Cited in 3 papers</a>

# INFORMATIONS

## Product overview

<b>Product name</b>	L-Noradrenaline antibody – Rabbit pAb
<b>Synonyms</b>	Anti-Noradrenaline antibody Anti-Norepinephrine antibody Anti-NA antibody
<b>Immunogen</b>	Conjugated Noradrenaline
<b>Specificity</b>	When tested in competitive ELISA, the anti-conjugated NA antibody did not show any significant cross reactivity with for example Dopamine and normetanephrine conjugates
<b>Volume</b>	50µL

## Storage

<b>Form</b>	Liquid
<b>Purity</b>	Purified anti-serum
<b>Storage buffer</b>	Store at +4°C for short term (1-2 months). Aliquot and store at -20°C for long term. Avoid repeated freeze / thaw cycles
<b>Material safety datasheet</b>	<a href="#">Download MSDS</a>

# PROTOCOLS

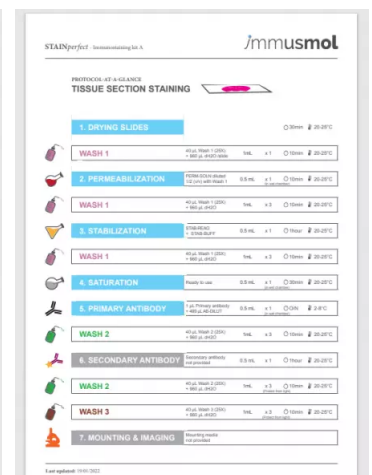
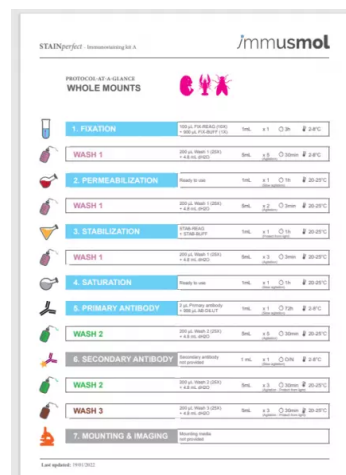
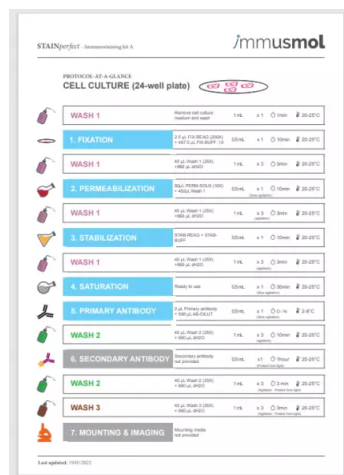
**IF - Cell cultures, Whole mounts, Tissue sections** Dilute antibody with the antibody diluent provided in the [STAINperfect immunostaining kit A](#). Use at 1/250 -1/1000 dilution. Follow the STAINperfect protocol suited to your sample

**Comments** Optimal working dilutions must be determined by the end-user

**Restrictions** For research use only

**Full protocol** [Download STAINperfect protocol for Noradrenaline staining](#)

## Protocols-at-a-glance



[Complete Instructions for Use](#)

[Protocol-at-a-glance for cell cultures](#)

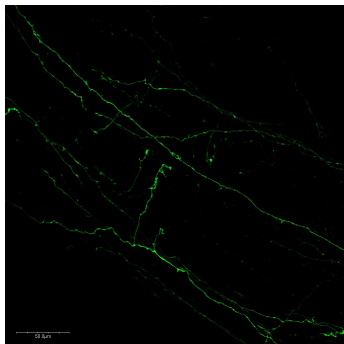
[Protocol-at-a-glance for whole mounts](#)

[Protocol-at-a-glance for tissue sections](#)

# REFERENCES

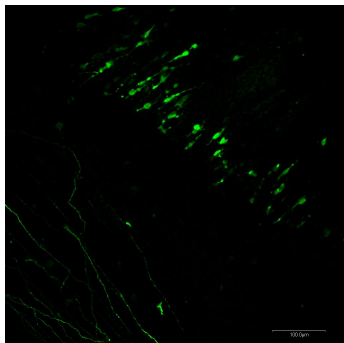
Product citations

# Product pictures



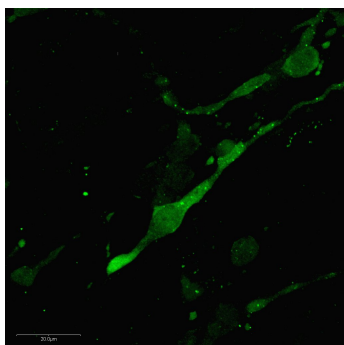
### **Noradrenaline fibers in the pons of mouse embryo.**

Noradrenergic fibers were specifically detected in the medulla of mouse embryo using STAINperfect immunostaining kit A and rabbit polyclonal anti-nordrenaline antibody and following the protocol for whole mount samples. Fluorescent secondary antibodies were used and pictures were acquired by confocal imaging.



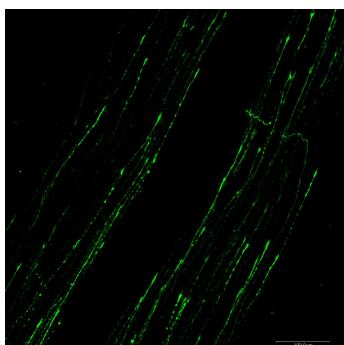
### **Noradrenergic neurones in the pons of embryonic mouse.**

Using STAINperfect immunostaining kit A, the anti-Noradrenaline rabbit polyclonal antibody (Ref: IS1042) demonstrates the presence of noradrenaline in embryonic mouse pons (E13.5). The staining was performed according to the protocol optimized for whole-mount samples and was revealed using fluorescent conjugated secondary antibody.



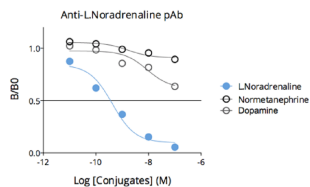
### **Noradrenergic neurones in CNS of mouse embryo.**

High magnification of noradrenergic neurones in the pons of embryonic mouse (E13.5) stained using STAINperfect immunostaining kit and anti-noradrenaline rabbit polyclonal antibody, with optimized protocol for whole mount samples. Fluorescent secondary antibodies were used and pictures were acquired by confocal imaging.



### **Norepinephrine fibers in the spinal cord of embryonic mouse.**

Immunostaining of noradrenergic fibers in the spinal cord lumbar level of mouse embryo using rabbit polyclonal anti-nordrenaline antibody. Staining was performed with STAINperfect immunostaining kit A, following the protocol for whole mount samples. Fluorescent secondary antibodies were used and pictures were acquired by confocal imaging .



### Affinity & specificity of anti- L-Noradrenaline antibody

Competitive ELISA demonstrates that low amounts of L-DOPA conjugate are required to abolish antigen-antibody reaction (high affinity), while rising concentrations of L-DOPA competitors Dopamine or Normetanephrine do not affect reaction (high specificity).

## Contact information

Immusmol  
229 Cours de l'Argonne  
33 000 Bordeaux - France  
Tel: +33 (0) 5 6431 1170  
[www.immusmol.com](http://www.immusmol.com)

**To order, review, ask for technical support, visit product page at:**

<https://www.immusmol.com/shop/l-noradrenaline-rabbit-ab/>