

# L-PhenylAlanine rabbit pAb – IS1038

Ref: IS1038-sp

The anti-L-Phenylalanine antibody IS1038 is a rabbit polyclonal antibody developed to be highly affine and specific. In combination with optimal samples preparation using [STAINperfect immunostaining kit A](#), this antibody allows direct L-Tyrosine visualization in whole mount, tissue sections.

<b>Clonality</b>	Polyclonal antibody
<b>Host</b>	Rabbit
<b>Reactivity</b>	Reacts with all species
<b>Tested samples</b>	Whole mount, tissue sections & ELISA
<b>Staining procedure</b>	<a href="#">STAINperfect immunostaining kit A</a>
<b>Format</b>	25µL (approx. 40 tissue sections)

# INFORMATIONS

---

## Product overview

---

<b>Product name</b>	L-Phenylalanine antibody
<b>Synonyms</b>	Anti-L-Phenylalanine polyclonal antibody (S)-2-Amino-3-phenyl propionic acid polyclonal antibody
<b>Immunogen</b>	Conjugated L-Phenylalanine
<b>Specificity</b>	When tested in competitive ELISA, the anti-conjugated L-Tyrosine antibody do not show significant cross-reactivity with several competitors including L-Tyrosine and L-DOPA conjugates

## Storage

<b>Form</b>	Liquid
<b>Purity</b>	Purified anti-serum
<b>Storage buffer</b>	Store at +4°C for short term (1-2 months). Aliquot and store at -20°C for long term. Avoid repeated freeze / thaw cycles
<b>Material safety datasheet</b>	<a href="#">Download MSDS</a>

# PROTOCOLS

## IF - Cell cultures, Whole mounts, Tissue sections

Dilute antibody with the antibody diluent provided in the [STAINperfect immunostaining kit A](#). Use at 1/250 -1/1000 dilution. Follow the STAINperfect protocol suited to your sample

### Comments

Optimal working dilutions must be determined by the end-user

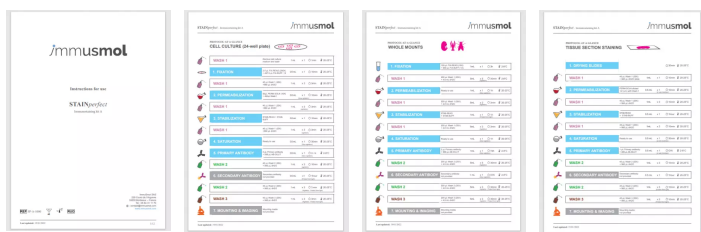
### Restrictions

For research use only

### Full protocol

[Download STAINperfect protocol for L.Phenyl-Alanine staining](#)

### Protocols-at-a-glance



[Complete Instructions for Use](#)

[Protocol-at-a-glance for cell cultures](#)

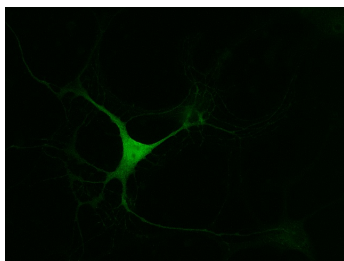
[Protocol-at-a-glance for whole mounts](#)

[Protocol-at-a-glance for tissue sections](#)

# REFERENCES

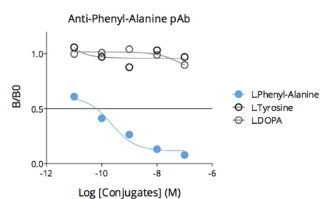
Antibody not yet cited. Submit an article and [get a 10% discount](#).

# Product pictures



### Phenyl-L.Alanine imaging in mouse embryonic midbrain neurons (E13.5)

Using STAINperfect immunostaining kit A, Phenyl-L.Alanine (green) was detected within mouse embryonic midbrain neurons (E13.5) following the protocol optimized for whole mount samples. Stainings were performed using Immusmol rabbit anti-Phenyl-L.Alanine polyclonal Ab (IS1038). Fluorescent conjugated antibodies were used and images acquired by confocal imaging.



### Affinity & specificity of anti-L-Phenylalanine antibody

Competitive ELISA demonstrates that low amounts of L-Phenyl-Alanine conjugate are required to abolish antigen-antibody reaction (high affinity), while rising concentrations of L-Phenyl-Alanine competitors L-Tyrosine or L-DOPA do not affect reaction (high specificity).

## Contact information

Immusmol  
229 Cours de l'Argonne  
33 000 Bordeaux - France  
Tel: +33 (0) 5 6431 1170  
[www.immusmol.com](http://www.immusmol.com)

**To order, review, ask for technical support, visit product page at:**

<https://www.immusmol.com/shop/l-phenylalanine-polyclonal-antibody-bundle/>