

L-Homoarginine rabbit pAb - IS1025

Ref: IS1025-sp

Validated by direct and competitive ELISA, this rabbit polyclonal antibody recognizes L-Homoarginine at 1/10 000 working dilution, while displaying no significant cross-reactivity with competitors such as Asymmetric DiMethyl Arginine (ADMA), Symmetric DiMethyl Arginine (SDMA) and L-Arginine. In combination with optimal sample preparation using [STAINperfect immunostaining kit A](#), this antibody could allow direct L.Homoarginine visualization in various type of samples (cell culture, tissue...).

Clonality	Polyclonal
Host	Rabbit
Reactivity	Reacts with all species
Validated by	ELISA
Staining procedure	STAINperfect immunostaining kit A
References	Not yet cited to our knowledge. Submit content and get a 10% discount!
Format	50µl

INFORMATIONS

Product overview

Product name	L-Homoarginine - Rabbit pAb
Synonyms	Anti-L-Homoarginine antibody Anti-(S)-2-Amino-6-guanidinohexanoic acid hydrochloride antibody
Immunogen	Conjugated L-Homoarginine
Specificity	When tested in competitive ELISA, the anti-conjugated L-Homoarginine antibody did not show any significant cross reactivity with L-Homoarginine competitors, Asymmetric DiMethyl Arginine (ADMA), Symetric DiMethyl Arginine (SDMA) and L-Arginine

Storage

Form	Liquid
Purity	Purified anti-serum
Storage	Store at 4°C
Storage buffer	Store at +4°C for short term (1-2 months). Aliquot and store at -20°C for long term. Avoid repeated freeze / thaw cycles
Material safety datasheet	Download MSDS

PROTOCOLS

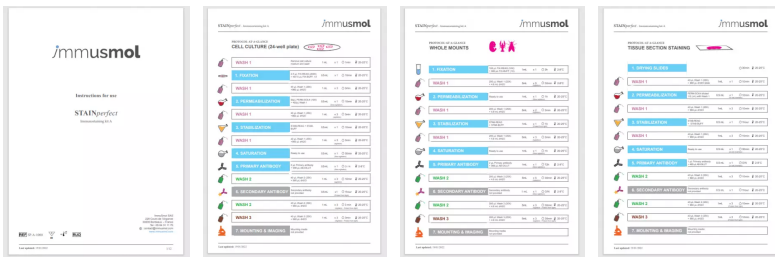
IF - Cell cultures, Whole mounts, Tissue sections

Dilute antibody with the antibody diluent provided in the [STAINperfect immunostaining kit A](#). Use at 1/250 -1/1000 dilution. Follow the STAINperfect protocol suited to your sample

Comments Optimal working dilutions must be determined by the end-user

Restrictions For research use only

Full protocol [Download STAINperfect protocol](#)



[Complete Instructions for Use](#)

[Protocol-at-a-glance for cell cultures](#)

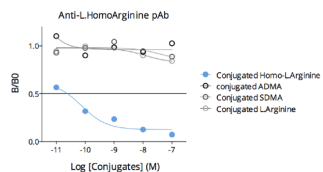
[Protocol-at-a-glance for whole mounts](#)

[Protocol-at-a-glance for tissue sections](#)

REFERENCES

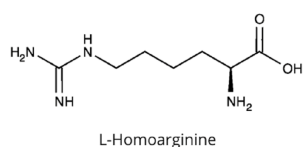
Antibody not yet cited. Submit an article and [get a 10% discount](#).

Product pictures



Affinity & specificity of anti-L-Homoarginine antibody

Competitive ELISA demonstrates that low amounts of L-Homoarginine conjugate are required to abolish antigen-antibody reaction (high affinity), while rising concentrations of Asymmetric Dimethyl Arginine (ADMA), Symmetric Dimethyl Arginine (SDMA) and L-Arginine (L-Homoarginine competitors) do not affect reaction (high specificity).



L-Homoarginine

L-Homoarginine

Contact information

Immusmol
 229 Cours de l'Argonne
 33 000 Bordeaux - France
 Tel: +33 (0) 5 6431 1170
 www.immusmol.com

To order, review, ask for technical support, visit product page at:

<https://www.immusmol.com/shop/l-homoarginine-polyclonal-antibody-bundle/>