

L-Ornithine rabbit pAb – IS1059

Ref: IS1059-sp

Validated by direct and competitive ELISA, this rabbit polyclonal antibody recognizes L-Ornithine at 1/10 000 working dilution, while displaying no significant cross-reactivity with competitors such as L-Glutamine, L-Glutamate and L-Arginine. In combination with optimal samples preparation using [STAINperfect immunostaining kit A](#), this antibody could allow direct L-Ornithine visualization in various type of samples (cell culture, tissue...).

Clonality	Polyclonal
Host	Rabbit
Reactivity	Reacts with all species
Validated by	ELISA
Staining procedure	STAINperfect immunostaining kit A
References	Not yet cited to our knowledge. Submit content and get a 10% discount!
Format	50µl

INFORMATIONS

Product overview

Product name	L-Ornithine – Rabbit pAb
Synonyms	Anti-L-Ornithine antibody Anti-(S)-2,5-Diaminopentanoic acid antibody Anti-(S)-Ornithine antibody Anti-(S)-2,5-diaminovaleric acid antibody
Immunogen	Conjugated L-Ornithine
Specificity	When tested in competitive ELISA, the anti-conjugated L-Ornithine antibody did not show any significant cross reactivity with L-Ornithine competitors: L-Glutamine, L-Glutamate and L-Arginine

Storage

Form	Liquid
Purity	Purified anti-serum
Storage	Store at 4°C
Storage buffer	Store at +4°C for short term (1-2 months). Aliquot and store at -20°C for long term. Avoid repeated freeze / thaw cycles
Material safety datasheet	Download MSDS

PROTOCOLS

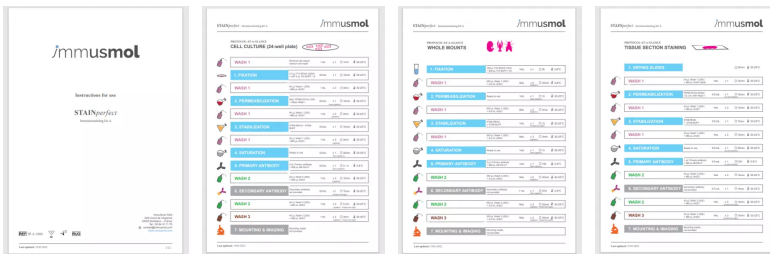
IF - Cell cultures, Whole mounts, Tissue sections

Dilute antibody with the antibody diluent provided in the [STAINperfect immunostaining kit A](#). Use at 1/250 -1/1000 dilution. Follow the STAINperfect protocol suited to your sample

Comments Optimal working dilutions must be determined by the end-user

Restrictions For research use only

Full protocol [Download STAINperfect protocol](#)

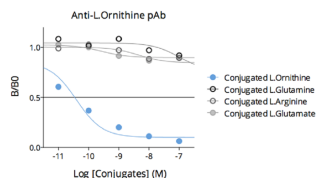


- [Complete Instructions for Use](#)
- [Protocol-at-a-glance for cell cultures](#)
- [Protocol-at-a-glance for whole mounts](#)
- [Protocol-at-a-glance for tissue sections](#)

REFERENCES

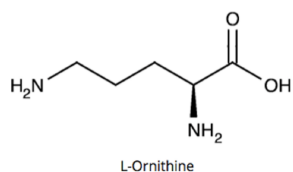
Antibody not yet cited. Submit an article and [get a 10% discount](#).

Product pictures



Affinity & specificity of anti- L-Ornithine antibody

Competitive ELISA demonstrates that low amounts of L-Ornithine conjugate are required to abolish antigen-antibody reaction (high affinity), while rising concentrations of L-Glutamine, L-Glutamate and L-Arginine (L-Ornithine competitors) do not affect reaction (high specificity).



L-Ornithine

L-Ornithine

Contact information

Immusmol
 229 Cours de l'Argonne
 33 000 Bordeaux - France
 Tel: +33 (0) 5 6431 1170
 www.immusmol.com

To order, review, ask for technical support, visit product page at:

<https://www.immusmol.com/shop/l-ornithine-polyclonal-antibody-bundle/>