

D-Glutamate rabbit pAb – IS1002

Ref: IS1002-sp

This anti-D-Glutamate rabbit polyclonal antibody IS1002 was developed to ensure superior affinity and specificity. Combined with the [STAINperfect immunostaining kit A](#), this antibody allows direct D-Glutamic acid visualization in cell cultures, whole mounts and tissue sections.

Clonality	Polyclonal antibody
Host	Rabbit
Reactivity	Reacts with all species
Eligible samples	Whole mounts, cell culture, tissue sections
Staining procedure	STAINperfect immunostaining kit A
Format	50µL (approx. 40 tissue sections)

INFORMATIONS

Product overview

Product name	D-Glutamate antibody – Rabbit pAb
Synonyms	Anti-D-Glutamic acid antibody
Immunogen	Conjugated D-Glutamate
Specificity	When tested in competitive ELISA, the anti-conjugated D-Glutamate antibody did not show any significant cross reactivity with D-Glutamate analogs, L-Glutamate and D-Aspartate

Reconstitution & storage

Form	Liquid
Purity	Purified anti-serum
Storage buffer	Store at +4°C for short term (1-2 months). Aliquot and store at -20°C for long term. Avoid repeated freeze / thaw cycles
Material safety datasheet	Download MSDS

PROTOCOLS

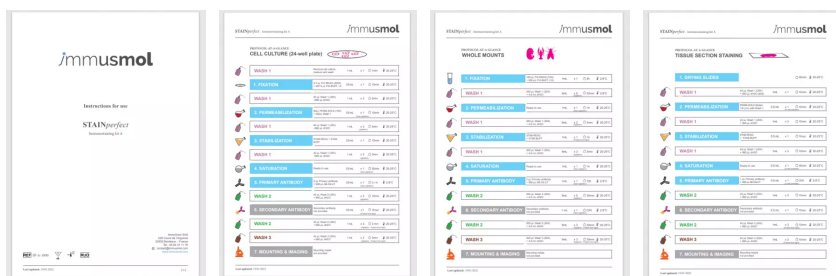
IF - Cell cultures, Whole mounts, Tissue sections Dilute antibody with the antibody diluent provided in the [STAINperfect immunostaining kit A](#). Use at 1/250 -1/1000 dilution. Follow the STAINperfect protocol suited to your sample

Comments Optimal working dilutions must be determined by the end-user

Restrictions For research use only

Full protocol [Download STAINperfect protocol for D-Glutamate staining](#)

Protocols-at-a-glance



[Complete Instructions for Use](#)

[Protocol-at-a-glance for cell cultures](#)

[Protocol-at-a-glance for whole mounts](#)

[Protocol-at-a-glance for tissue sections](#)

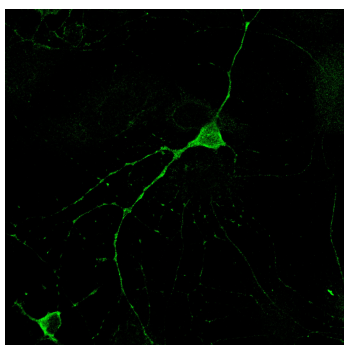
REFERENCES

Antibody not yet cited. Submit an article and [get a 10% discount](#).

Selected papers on D-Glutamic acid:

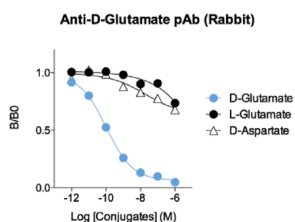
- [Dayer MR and Dayer MS. Hypoglycemic Effects of D-glutamic Acid in Diabetic Rats International Journal of Pharmacology, 2010 Nov 6: 930-936.](#)
- [Mangas A et al. Immunocytochemical visualization of D-glutamate in the rat brain. Neuroscience. 2007 Jan 19;144\(2\):654-64. Epub 2006 Nov 3.](#)
- [Fisher GH et al. Presence of D-aspartate and D-glutamate in tumor proteins. Cancer Biochem Biophys. 1995 Nov;15\(2\):79-82.](#)
- [Kera Y et al. Presence of free D-glutamate and D-aspartate in rat tissues. Biochim Biophys Acta. 1995 Feb 23;1243\(2\):283-6.](#)

Product pictures



D-Glutamate detection in primary mouse cortical neurons

Primary mouse cortical neurons were stained using ImmuSmol anti-D-Glutamate antibody using the STAINperfect immunostaining kit A and following the optimized protocol for cell culture. Alexa fluor 488 conjugated secondary antibodies were used and image was captured by confocal imaging.



Affinity & specificity of anti-D-Glutamate antibody

Competitive ELISA demonstrates that low amount of D-Glutamate conjugate is required to abolish antigen-antibody reaction (high affinity), while rising concentrations of L-Glutamate and D-Aspartate conjugates do not affect reaction (high specificity).

Contact information

Immusmol

229 Cours de l'Argonne

33 000 Bordeaux - France

Tel: +33 (0) 5 6431 1170

www.immusmol.com

To order, review, ask for technical support, visit product page at:

<https://www.immusmol.com/shop/d-glutamate-polyclonal-antibody-bundle/>