

Serotonin ELISA kit

I Fast Assay I Serum and Urine

Ref: BA-E-8900

This Serotonin (5-HT) ELISA kit is tailored for the rapid measurement of 5-hydroxytryptamine in serum, urine and platelets. Intended for *in vitro* diagnostics and research use, this fast-track quantitative immunoassay enables the determination of serotonin levels in up to 40 samples within 75 minutes.

Sample type	25µl serum, urine
Samples/kit	40 samples in duplicate
Sensitivity	8ng/ml
Range	8 - 2 170ng/ml
Assay time	Sample acylation (15 min), ELISA (1h)
Reactivity	Reacts with all species
Citations	Cited in 3 papers

INFORMATIONS

Product overview

Product name	Serotonin ELISA kit – Serum, Urine – Fast Track
Description	<i>In vitro</i> diagnostics and research enzyme immunoassay (ELISA) for the fast determination of 5-hydroxytryptamine (5-HT, Serotonin) in serum or urine
Labels	IVD (EU only) or RUO, CE
Format	96-well plate
Samples	25 µl serum, urine
Reactivity	Reacts with all species
Standard range	0 / 15 – 2 500ng/ml
Sensitivity	5ng/ml
Specificity	No significant cross-reactivity was observed with Serotonin analogs such as Tryptamine, Melatonin, 5-Hydroxyindole acetic acid, Phenylalanine, Histidine, Tyramine and 5-Hydroxytryptophan
Assay time	1h15
Storage	Store at 2-8°C for up to 6 months
Datasheets	Instructions for use , Material safety datasheet

PROTOCOLS

Sample collection & storage

Serum: Do not use haemolytic and especially lipemic samples. Storage: up to 6 hours at 2 – 8°C; for longer periods (up to 6 months) at – 20°C

Urine: Spontaneous or 24-hours urine, collected in a bottle containing 10-15 mL of 6 M HCl. Storage: for longer periods (up to 6 months) at -20°C

Sample preparation

Sample acylation (15min)

ELISA

Serotonin antiserum incubation (30min), revelation and read steps (30min)

Detailed protocol

[Download instructions for use](#)

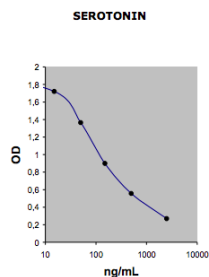
REFERENCES

Product citations

Product pictures



Serotonin ELISA kit



Fast 5-HT ELISA: Standard curve

Standard curve - to be generated every time the assay is performed.



Serotonin ELISA kit



Serotonin ELISA kit

Contact information

Immusmol
229 Cours de l'Argonne
33 000 Bordeaux - France
Tel: +33 (0) 5 6431 1170
www.immusmol.com

To order, review, ask for technical support, visit product page at:

<https://www.immusmol.com/shop/serotonin-elisa-kit-serum-urine-platelets/>