

Kynurenic Acid ELISA kit

High Sensitivity – Serum

Ref: IS-I-0200R

Kynurenic acid (KYNA) is a downstream metabolite produced along the Kynurenine Pathway well-known to possess several neuromodulatory functions, as well as immuno-modulatory properties. Measurement of KYNA in biological samples has been presented as a possible biomarker in several diseases including neurological or psychiatric disorders.

The Kynurenic Acid ELISA kit is optimized for the quantitation of Kynurenic Acid (KYNA) within **serum** samples. This easy-to-use competitive assay is well-suited for both small and large series of samples. Working with a 50µL sample volume, this assay enables pre-clinical and clinical sample testings.

Sample type Serum

Capacity 96 tests

Sensitivity 2.8nM

Range 10 - 391nM

Assay time Sample derivatization 90 min, ELISA overnight

Reactivity Reacts with all species

References [Cited in 7 papers](#)

INFORMATIONS

Product overview

Product name	Kynurenic Acid ELISA kit
Description	Competitive ELISA kit for the quantitative measurement of Kynurenic Acid in serum samples. For research use only
Format	96-well plate
Samples	Serum
Minimal sample volume	50µL
Reactivity	Reacts with all species
Standard range	1.40 - 74ng/mL
Sensitivity	0.53ng/mL
Specificity	No significant cross-reactivity was observed with Kynurenic Acid analogs such as Quinolinic Acid, Xanthurenic acid, Kynurenine, Picolinic acid, 3-Hydroxy-Anthranilic Acid
Assay time	Sample derivatization 90 min and ELISA overnight
Storage	Store at 2-8°C for up to 6 months
Datasheets	Instructions for use , Material Safety Datasheet

PROTOCOLS

Sample collection & storage Serum: Do not use lipemic, haemolytic samples, as well as samples containing precipitates or fibrin strands
Store samples at 2-8°C for up to 48h or -20°C for longer period (up to 6 months)

Sample preparation Sample derivatization (90 min)

ELISA Kynurenic acid antiserum overnight incubation, revelation and read steps (1h)

Detailed protocol [Download instructions for use](#)

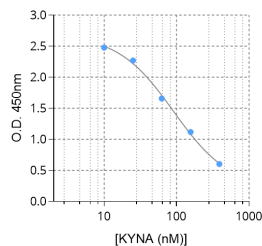
REFERENCES

Product citations

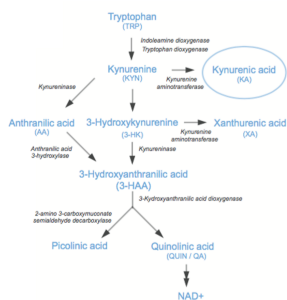
Product pictures



Kynurenic acid ELISA kit



Typical standard curve of Kynurenic acid ELISA



Kynurenic acid (KYNA) is a metabolite produced along the Kynurenine Pathway

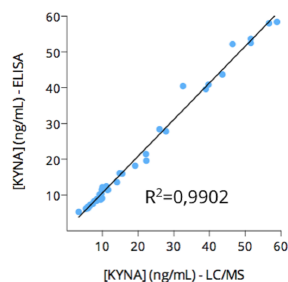
Kynurenic acid (KYNA) is a downstream metabolite produced along the Kynurenine Pathway well-known to possess several neuromodulatory functions, as well as immunomodulatory properties.



Kynurenic acid ELISA kit



Kynurenic acid ELISA kit



Cross-validation of Kynurenic Acid ELISA and LC/MS data in human serum samples

Human serum samples (n=40) were processed for Kynurenic Acid measurement by mean of both KYNA ELISA kit and liquid chromatography-mass spectrometry (LC/MS). As depicted, results obtained with ELISA and LC/MS are highly correlated (R Squared=0,9902).

Contact information

Immusmol
229 Cours de l'Argonne
33 000 Bordeaux - France
Tel: +33 (0) 5 6431 1170
www.immusmol.com

To order, review, ask for technical support, visit product page at:

<https://www.immusmol.com/shop/kynurenic-acid-elisa-kit/>