

# Global Arginine Bioavailability ratio (GABR) ELISA pack – Serum, Plasma

Ref: ISE-451000R

This ELISA pack provides an easy way to assess the plasma/serum Global Arginine Bioavailability Ratio (GABR), defined as arginine/[ornithine + citrulline]. The GABR indicates the availability of arginine for Nitric Oxide production. Low GABR may serve to assess endothelial dysfunction, atherosclerosis, and cardiovascular disorders.

**Sample type** 20 µl serum or plasma samples

---

**Kit capacity** 3 x 96 tests

---

**Sensitivity** ARG: 2.1µM ORN: 8.5µM CIT: 1.47µM

---

**Range** ARG: 5.12 - 200µM ORN: 20 - 781.25µM CIT: 6.4 - 250µM

---

**Reactivity** Reacts with all species

## INFORMATIONS

---

### Product overview

<b>Product name</b>	Global arginine bioavailability ratio (GABR) ELISA pack
<b>Description</b>	Tfree enzyme immunoassays (ELISA) allowing the quantitative determination of L-Arginine, L-Ornithine and L-Citrulline in plasma/serum samples. <b>For research use only</b>
<b>Labels</b>	RUO
<b>Format</b>	3 x 96-well plate
<b>Samples</b>	Serum, Plasma
<b>Minimum sample volume</b>	20µL
<b>Reactivity</b>	Reacts with all species
<b>Standard range</b>	ARG: 5.12 – 200µM ORN: 20 – 781.25µM CIT: 6.4 – 250µM
<b>Sensitivity</b>	ARG: 2.1µM ORN: 8.5µM CIT: 1.47µM
<b>Specificity</b>	No significant cross-reactivity was observed with analogs for each kit. See product pages for <a href="#">Arginine ELISA</a> , <a href="#">Ornithine ELISA</a> , and <a href="#">Citrulline ELISA</a>
<b>Storage</b>	Store at 2-8°C for to 6 months
<b>Datasheets</b>	<a href="#">Instructions for use – ARG kit</a> , <a href="#">Instructions for use – ORN kit</a> , <a href="#">Instructions for use – CIT kit</a> <a href="#">Safety datasheet ARG/CIT</a> , <a href="#">Safety datasheet ORN</a>

---

## PROTOCOLS

---

### Sample collection & storage

Plasma: Use EDTA as anticoagulant  
Serum: Do not use lipemic, haemolytic samples, as well as samples containing precipitates or fibrin strands. Store samples at 2-8°C for up to 48h or -20°C for longer period (up to 6 months)

---

### Sample preparation

Sample preparation (3 hours)

---

### ELISA

Antisera overnight incubation, revelation and read steps (1h)

---

### Detailed protocol

[Instructions for use - ARG kit](#), [Instructions for use - ORN kit](#), [Instructions for use - CIT kit](#)

## REFERENCES

---

### Not yet cited

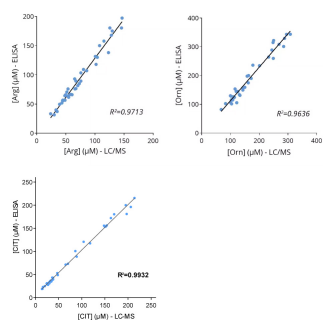
## Product pictures

---



**Global Arginine Bioavailability ratio (GABR) ELISA pack**

---



**Cross-validation of L-Arginine, L-Ornithine, and L-Citrulline ELISA and LC/MS data in human plasma samples**

---

## Contact information

Immusmol  
229 Cours de l'Argonne  
33 000 Bordeaux - France  
Tel: +33 (0) 5 6431 1170  
www.immusmol.com

**To order, review, ask for technical support, visit product page at:**

<https://www.immusmol.com/shop/global-arginine-bioavailability-ratio-gabr-elisa-pack-serum-plasma/>