

# L-Histidine Antibody – Rabbit

## Polyclonal

Ref: IS1066

Highly affine and specific, the IS1066 anti-L-Histidine antibody can be used with the [STAINperfect immunostaining kit A](#) to perform ICC/IHC/IF stainings in cell cultures, whole mounts and tissue sections.

<b>Clonality</b>	Polyclonal
<b>Host</b>	Rabbit
<b>Reactivity</b>	Reacts with all species
<b>Validated by</b>	ELISA
<b>Staining procedure</b>	<a href="#">STAINperfect immunostaining kit A</a>
<b>Format</b>	50µl

# INFORMATIONS

## Product overview

<b>Product name</b>	L-Histidine – Rabbit pAb
<b>Synonyms</b>	Anti-Histidine antibody Anti-His antibody Anti-2-Amino-3-(1 <i>H</i> -imidazol-4-yl)propanoic acid antibody
<b>Immunogen</b>	Conjugated L-Histidine
<b>Specificity</b>	When tested in competitive ELISA, the anti-conjugated L-Histidine antibody did not show any significant cross-reactivity with L-Histidine competitors: Histamine, L-Histidinol, and 3-Methyl-L-Histidine

## Storage

<b>Form</b>	Liquid
<b>Purity</b>	Purified anti-serum
<b>Storage</b>	Store at 4°C
<b>Storage buffer</b>	Store at +4°C for short term (1-2 months). Aliquot and store at -20°C for long term. Avoid repeated freeze / thaw cycles
<b>Material safety datasheet</b>	<a href="#">Download MSDS</a>


PROTOCOLS

**IF - Cell cultures, Whole mounts, Tissue sections** Dilute antibody with the antibody diluent provided in the [STAINperfect immunostaining kit A](#). Use at 1/250 -1/1000 dilution. Follow the STAINperfect protocol suited to your sample

**Comments** Optimal working dilutions must be determined by the end-user

**Restrictions** For research use only

**Full protocol** [Download STAINperfect protocol](#)



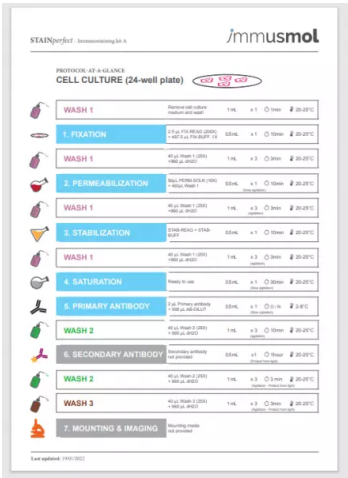
STAINperfect Immunostaining kit A

Instructions for use

STAINperfect Immunostaining kit A

immusmol

immusmol



STAINperfect Immunostaining kit A

immusmol

PROTOCOL-AT-A-GLANCE  
CELL CULTURE (24-well plate)

1. FIXATION

2. PERMEABILIZATION

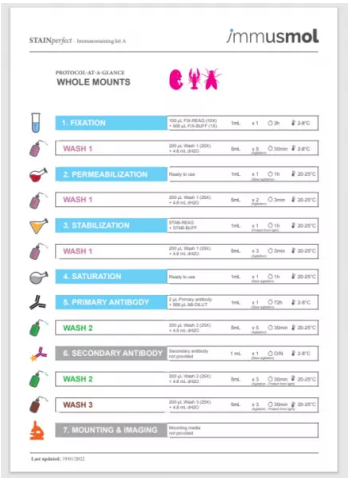
3. STABILIZATION

4. SATURATION

5. PRIMARY ANTIBODY

6. SECONDARY ANTIBODY

7. MOUNTING & IMAGING



STAINperfect Immunostaining kit A

immusmol

PROTOCOL-AT-A-GLANCE  
WHOLE MOUNTS

1. FIXATION

2. PERMEABILIZATION

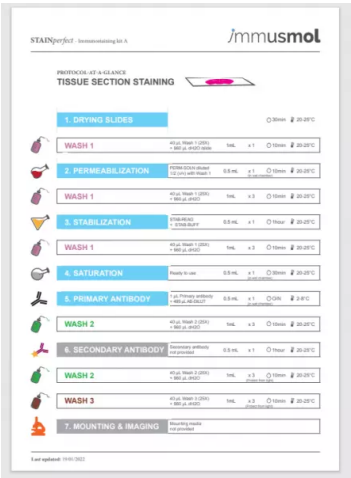
3. STABILIZATION

4. SATURATION

5. PRIMARY ANTIBODY

6. SECONDARY ANTIBODY

7. MOUNTING & IMAGING



STAINperfect Immunostaining kit A

immusmol

PROTOCOL-AT-A-GLANCE  
TISSUE SECTION STAINING

1. DRYING SLIDES

2. PERMEABILIZATION

3. STABILIZATION

4. SATURATION

5. PRIMARY ANTIBODY

6. SECONDARY ANTIBODY

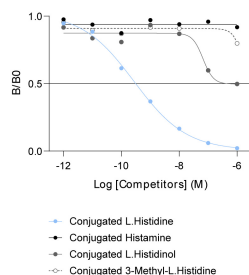
7. MOUNTING & IMAGING

- [Complete Instructions for Use](#)
- [Protocol-at-a-glance for cell cultures](#)
- [Protocol-at-a-glance for whole mounts](#)
- [Protocol-at-a-glance for tissue sections](#)

REFERENCES

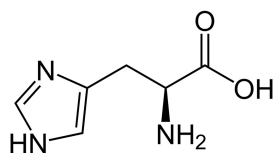
Antibody not yet cited.

Product pictures



### Affinity & specificity of anti-L-Histidine antibody

Competitive ELISA demonstrates that low amounts of L-Histidine conjugate are required to abolish antigen-antibody reaction (high affinity), while rising concentrations of Histamine, L-Histidinol, and 3-Methyl-L-Histidine (L-Histidine competitors) do not affect reaction (high specificity).



L-Histidine

## Contact information

Immusmol

229 Cours de l'Argonne

33 000 Bordeaux - France

Tel: +33 (0) 5 6431 1170

[www.immusmol.com](http://www.immusmol.com)

**To order, review, ask for technical support, visit product page at:**

<https://www.immusmol.com/shop/l-histidine-antibody-rabbit-polyclonal/>